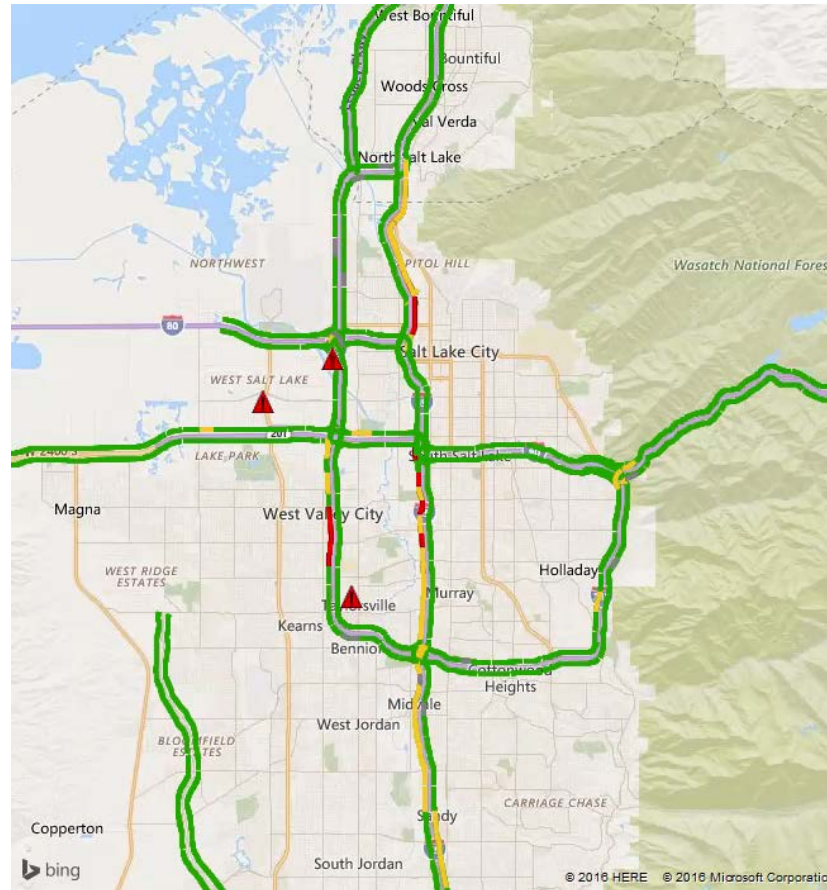


Session 2: Performance Measures

Where is everybody?

- What type of performance measures tools do you use to report to the following?
 - Map-21 (anticipated) and Federal requirements
 - State performance measures and goals
 - Regional performance measures and goals
- Describe the help if any, that you need to obtain, monitor or report on performance measures.
- How has performance measures that are being used affected operations?

Performance Measurement

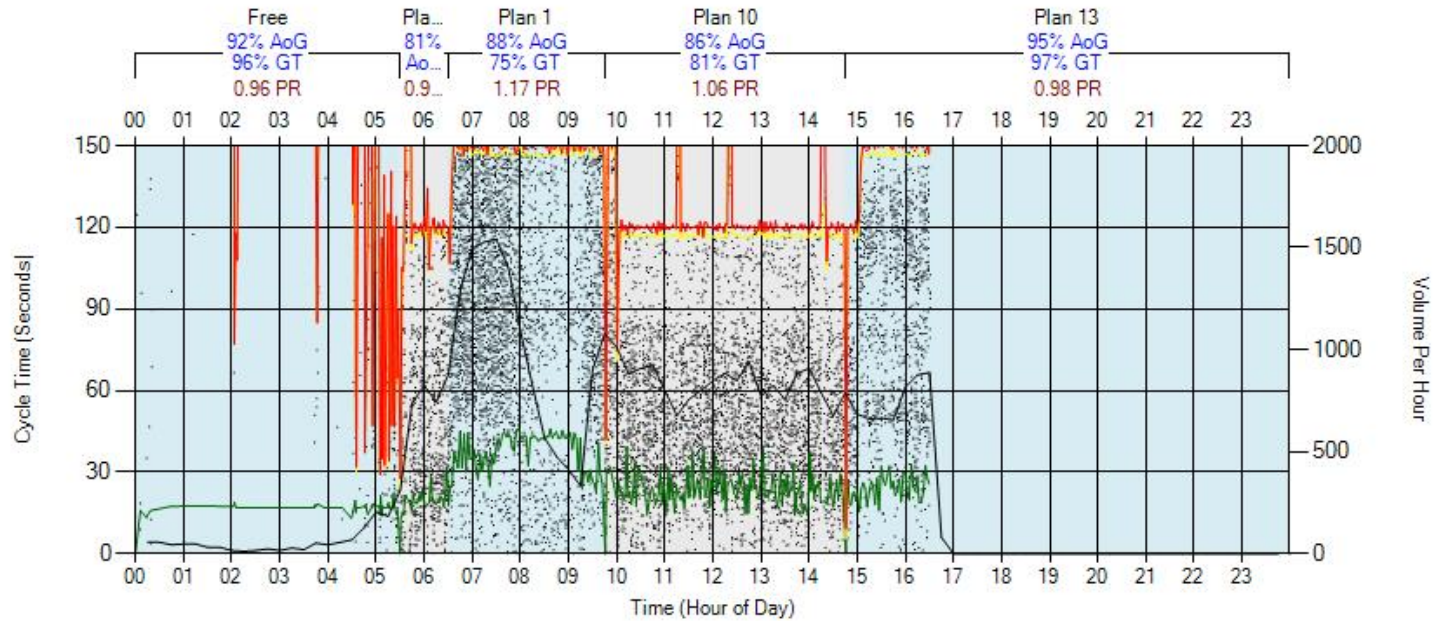


Signal Performance Metrics: Arrival on Green

Foothill Drive 2100 East Signal 7503 Phase: 2 Northbound
Thursday, September 22, 2016 12:00 AM - Thursday, September 22, 2016 11:59 PM

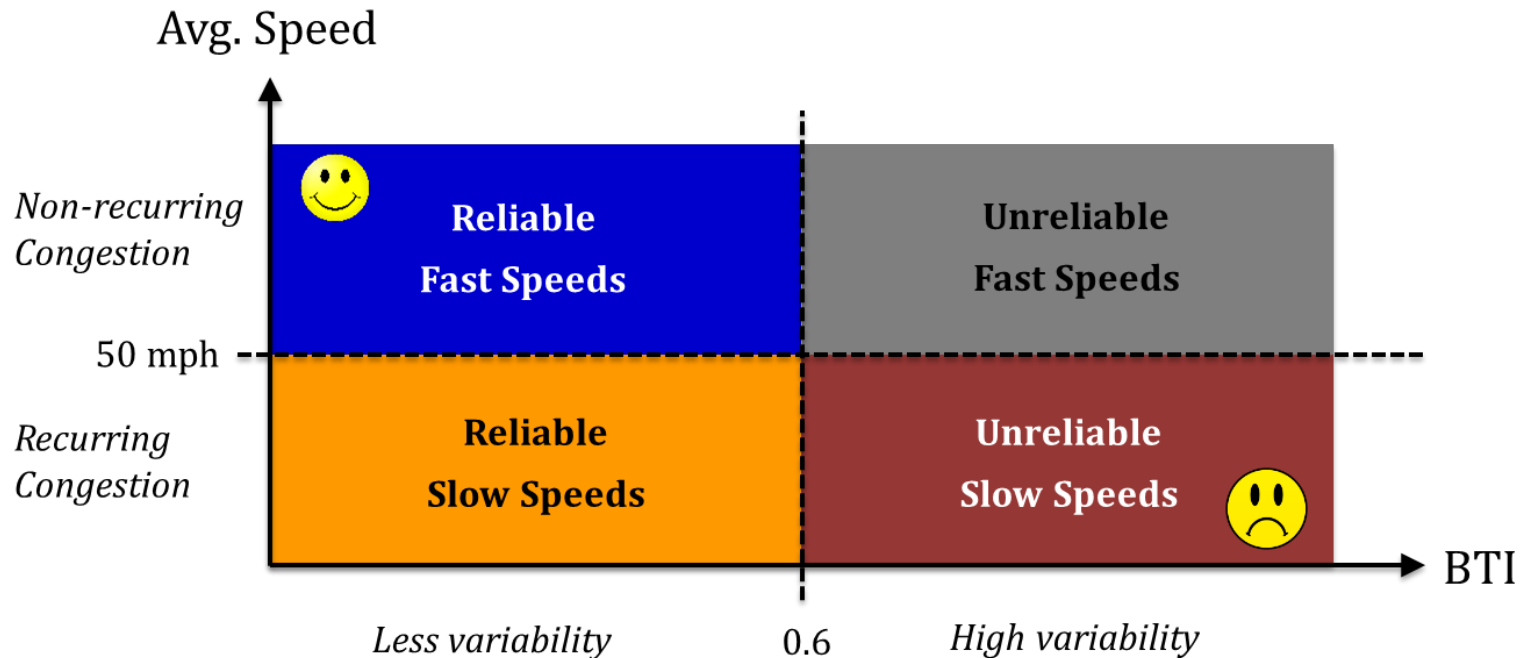
88% AoG

- Detector Activation
- Change to Green
- Change to Yellow
- Change to Red
- Volume Per Hour
- AoG - Arrival On Green
- GT - Green Time
- PR - Platoon Ratio

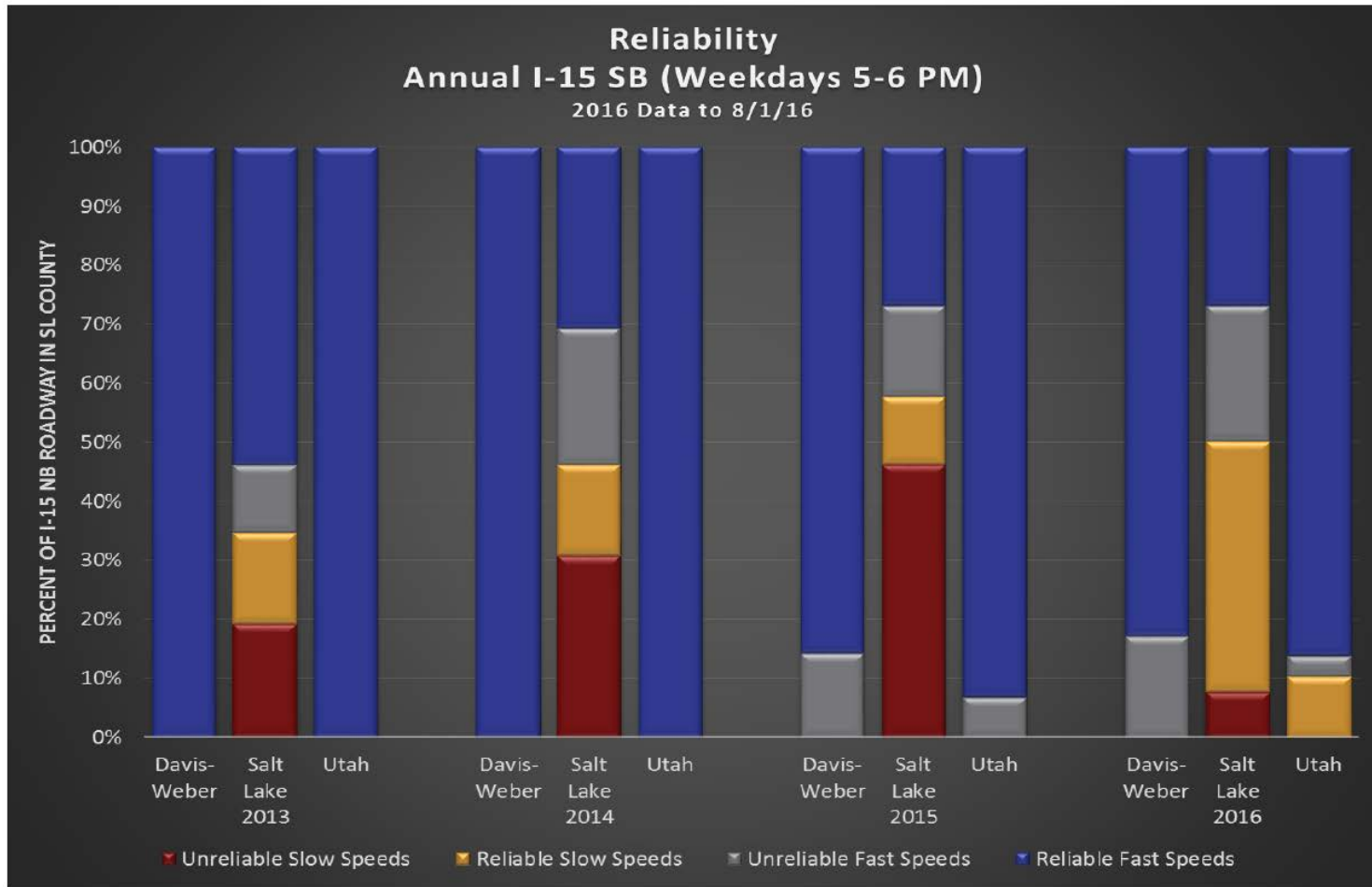


Freeway Performance Metrics: Reliability

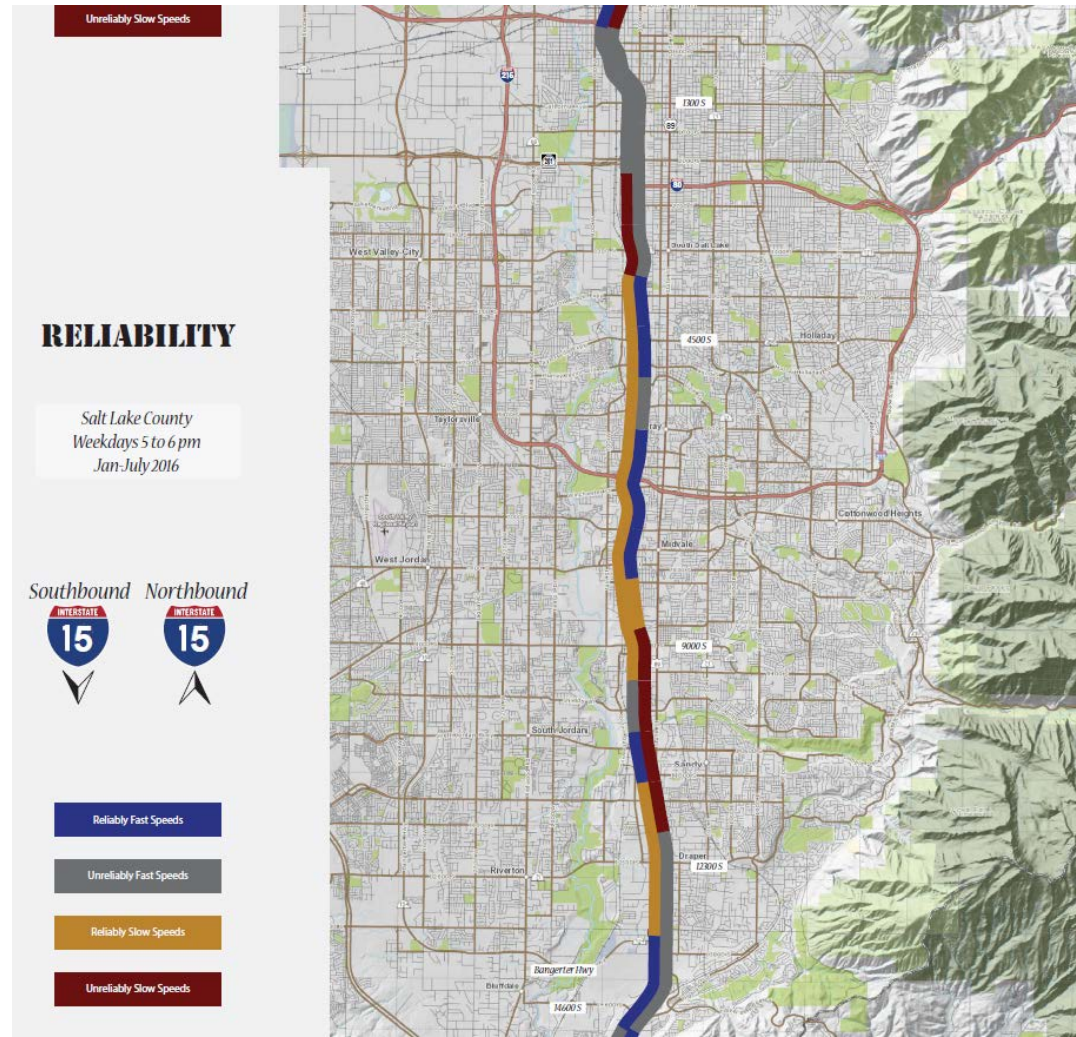
The Buffer Time Index (BTI) represents the **additional time** drivers need to add to their average travel time to ensure that they arrive at their destination on time 95% of the time.



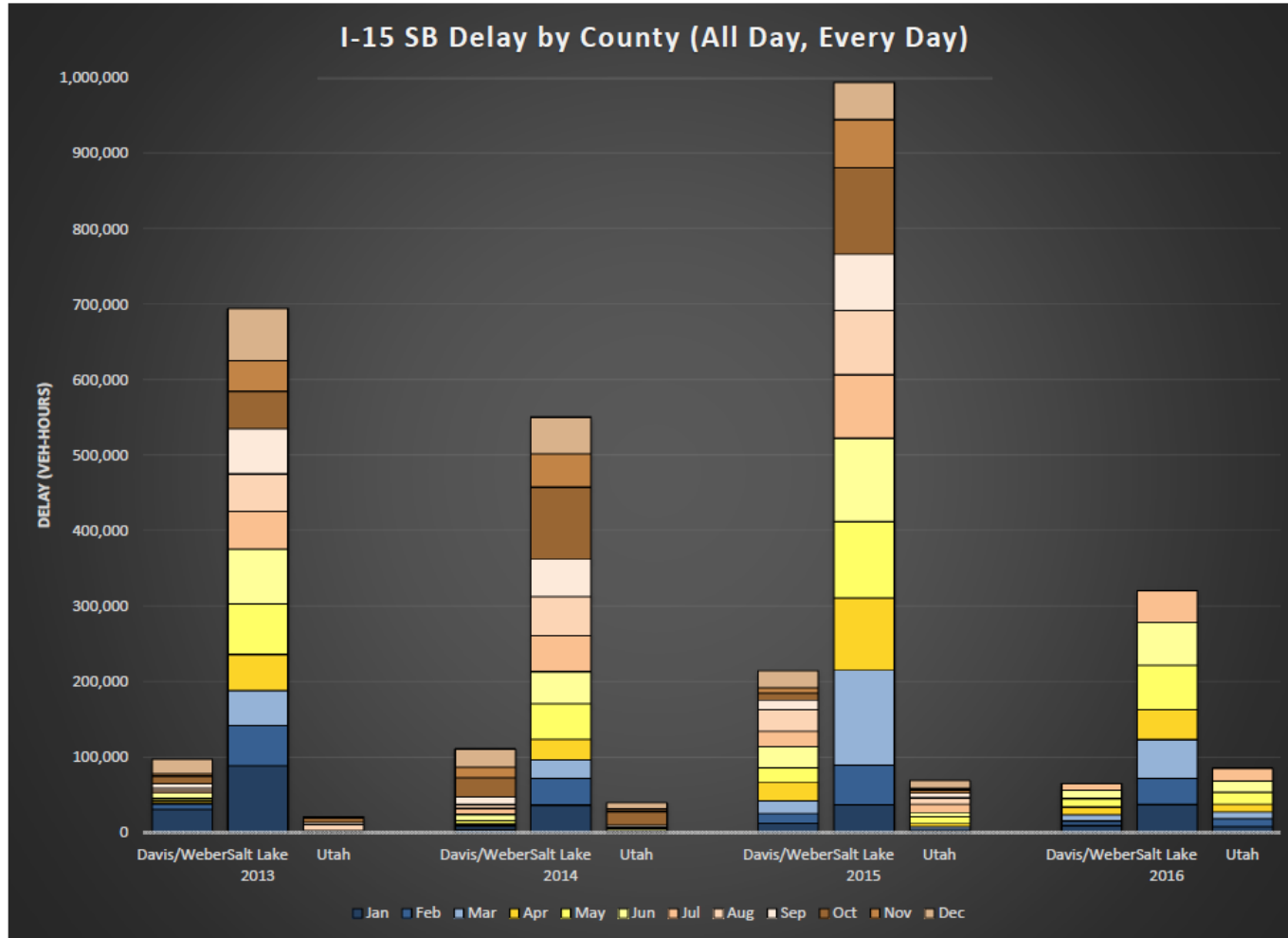
Freeway Performance Metrics: Reliability



Freeway Performance Metrics: Reliability Map



Freeway Performance Metrics: Delay



Snow and Ice Removal Performance Metric: Snow Removal Grade

SR-210 @ Powerhouse

[Link to Mesowest \(tabular data\)](#)

Select time frame by number of hours ago OR Select time frame by start and end date

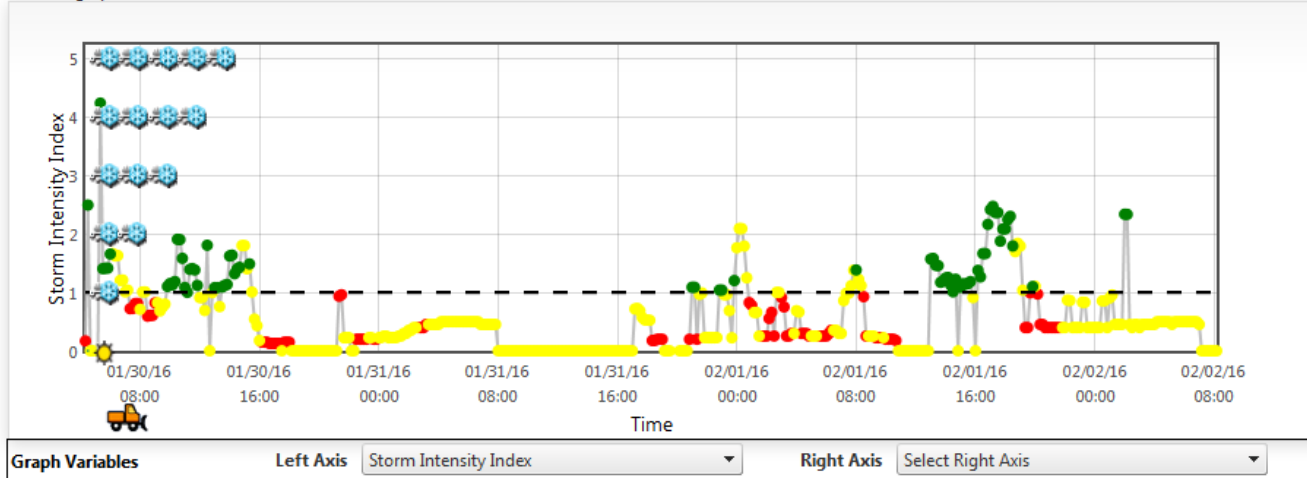
Start Date

 End Date

Resource Performance Statistics - Storm 13

EXCEPTIONAL	ACCEPTABLE	UNACCEPTABLE	MAINTENANCE RESOURCE GRADE
15.71%	65.27%	19.03%	B-

Click on graph to view data...



Current Conditions

Sample Time: 9/22/16 4:50 PM
Temp/RH: 50.8° F / 94.0%
Wind: W 4.0 mph, Gust 18.9 mph
Visibility: 9.47 mi
Snowfall rate: 0.00 in/hr
Precipitation Intensity: n/a
Snow Depth: 0.0 in
Road: 57.9° F, Wet
Ice Sight Road Grip: 0.63
Storm Intensity Index: 0.00 ☀️

Legend

- Road conditions exceptional given weather condition
- Road conditions acceptable given weather condition
- Unacceptable given weather condition
- Winter maintenance baseline

Selected Storm Event Summary - Storm 13

Weather Statistics	Minimum	Average	Maximum
Air Temp	15.8° F	21.8° F	33.6° F
Road Temp	17.1° F	23.3° F	34.0° F
Wind Gust	0.2 mph	6.0 mph	23.0 mph
Est. Snowfall Rate	0.0"/hr	0.2"/hr	4.2"/hr
Road Grip	0.15	0.36	0.84

2015-2016 Winter Summary

(through: 2/23/2016 12:10:00 AM)

Average Resource Performance: 80.12% (B-) Moderate
 Number of Storms: 17 High



Strategic Direction Dashboard: Aggregation of all key performance metrics

Sneak peak of new Strategic Direction Dashboard